

# Controllers



**LMI**  
MILTON ROY

# Excellence Through Versatility

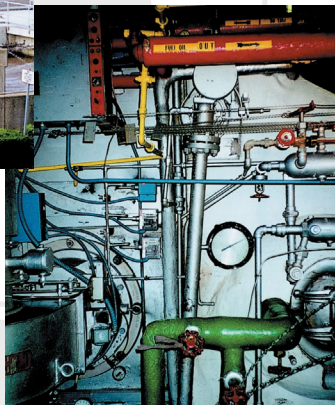


Located in Ivyland, Pennsylvania, LMI has been providing quality products and service to the water treatment industry worldwide for over 30 years.

Leading the way in the metering pump industry, LMI introduced the first full line of electronic metering pumps and accessories. The breadth of the LMI product line extends from low-cost metering pumps for domestic potable water treatment to highly sophisticated custom designs for specific customer applications.

Today, LMI continues to shape the future of the industry by offering a complete line of metering pump controllers and accessories for a wide variety of chemical-feed applications.

Utilizing superior designs and industry experience, as well as a state-of-the-art facility and highly trained service representatives, LMI offers Water Treatment Professionals the quality and reliability they've come to expect.



**Boiler**

**Cooling Tower**

**Industrial / Municipal**

**Water & Waste Water**

**Pool & Fountain**

## Accessories

- pH / ORP electrodes and manifolds
- Flow switches
- Conductivity probes and manifolds
- Boiler probes
- Motorized valves
- Pre-amplifier



## Remote Communications Module



- Communicate with up to 31 DC5500 Controllers
- Remote Viewing of real-time conductivity temperature and alarm conditions
- Program on LiquiComm™ Network remotely or locally
- Data downloads w/laptop or PC
- Automatic downloads with DataComm™ software
- DataComm™ stores up to 31 days of Data in Graph and report formats ready for printing

## Conductivity Controllers

### DC4000 Series



- Designed for cooling tower / boiler applications
- Continuous or timed boiler sampling
- Multiple inhibitor feed modes
- 0 - 20,000  $\mu$ S range
- Solenoid or motorized valve control
- Open- / closed-loop system programming
- 4 - 20 mA output [programmable]
- Built-in equipment test circuits

### DC4500 Series



- Designed for cooling tower applications
- Dual biocide control
- Multiple inhibitor feed modes
- 0 - 20,000  $\mu$ S range
- Solenoid or motorized valve control
- Open- / closed-loop system programming
- 4 - 20 mA output [programmable]
- Built-in equipment test circuits

## DC5500 Series with optional Remote Communications Module



- Multiple inhibitor feed modes
- 0 - 20,000  $\mu$ S range
- Solenoid or motorized valve control
- Open- / closed-loop system programming
- 4 - 20 mA output [programmable]
- Built-in equipment test circuits

- Two (2) water meter inputs to determine the exact amount of water lost to evaporation to save utility cost
- 32 character, two (2) backlit LCD data display lines
- Three (3) tank level indicator / alarms
- Communications package allows operators to link up to 31 controllers to easily receive / send data
- Designed for cooling tower applications

## pH/ORP Controllers

### DP5000/DR5000 Series



- 0 - 14 (pH) / +2000 to -2000 mV (ORP)
- Dual-channel output fully programmable
- On/off and/or proportional pump control
- Alarm output with programmable set points
- Drain valve control with programmable timers
- 3-point proportional pump control
- Probe diagnostics with 1- or 2-point calibration

## Flow Controller

### FS5000 Series



- Flow switch input
- Three (3) 115 VAC outputs [flow switch response]
- One (1) 115 VAC output [continuous power]
- Inexpensive pump controller



201 Ivyland Road • Ivyland, PA 18974 USA  
Tel: (215) 293-0401 • Fax: (800) 327-7563  
[www.lmipumps.com](http://www.lmipumps.com)

*Liquitron, LiquiComm and DataComm are registered trademarks.  
Windows is a registered trademark of Microsoft Corporation.*