



## Gas Pumping Equipment



SIHI Pumps  
[www.sterlingamericas.com](http://www.sterlingamericas.com)





## Liquid Ring Vacuum Pumps & Compressors

### VACUUM PUMP FEATURES

- Reduced maintenance
- Lower installation cost
- Handles liquids and soft solids

### PERFORMANCE RANGE

- 1/2 to 6000 acfm
- Vacuum to 29" Hg.

### COMPRESSOR FEATURES

- Low temperature rise
- Handles liquids and soft solids
- Quiet and low vibration
- Delivers clean oil-free air

### PERFORMANCE RANGE

- Up to 6000 cfm to 22 psig
- Up to 400 cfm to 100 psig
- Up to 100 cfm to 150+ psig



## Close Coupled Liquid Ring Vacuum Pumps

### FEATURES

- Minimum space
- High efficiency
- Single stage high vacuum
- Five major parts
- Built-in cavitation protection

### PERFORMANCE RANGE

- 3/4 hp to 10 hp
- 7 CFM to 160 acfm to 29" Hg. vacuum



## SIHIdry Dry Running Vacuum Pumps

### FEATURES

- No shaft seals
- No lubricating oil
- No mechanical gears
- No scheduled maintenance for 20,000 hours

### PERFORMANCE RANGE

- Up to 590 acfm to 10<sup>-3</sup> torr
- Up to 3500 acfm with optional rotary lobe booster



## Mag Drive Liquid Ring Vacuum Pumps

### FEATURES

- Zero leakage
- Long-life silicon carbide bearings
- Rare earth high efficiency magnets

### PERFORMANCE RANGE

- Up to 1000 acfm, and up to 29" Hg. vacuum



## Enviroseal Oil Sealed Systems

### FEATURES

- Quick delivery
- Competitive prices

### PERFORMANCE RANGE

- Standard ENV capacities from 75 to 600 acfm
- Custom ENV capacities to 2000+ acfm
- Inlet vacuum to 29" Hg+
- Air Cooled (standard)  
Water Cooled optional



## XBA, TRB Standard Packages

### FEATURES

- Compact design
- Quick delivery
- Water saving designs
- One stop purchasing & engineering

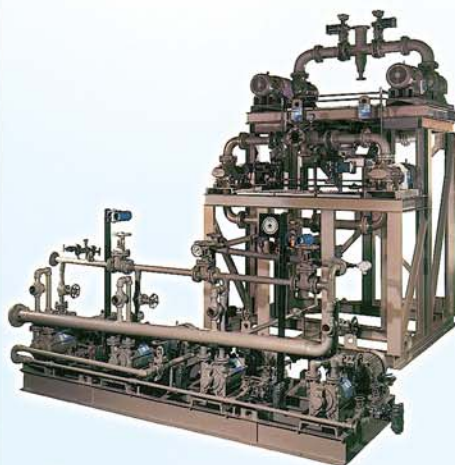
### PERFORMANCE RANGE

- Available for most vacuum pumps and compressors

## DGS Digester Gas Packages



## Hybrid Rotary Lobe Packages



## Custom Packages

